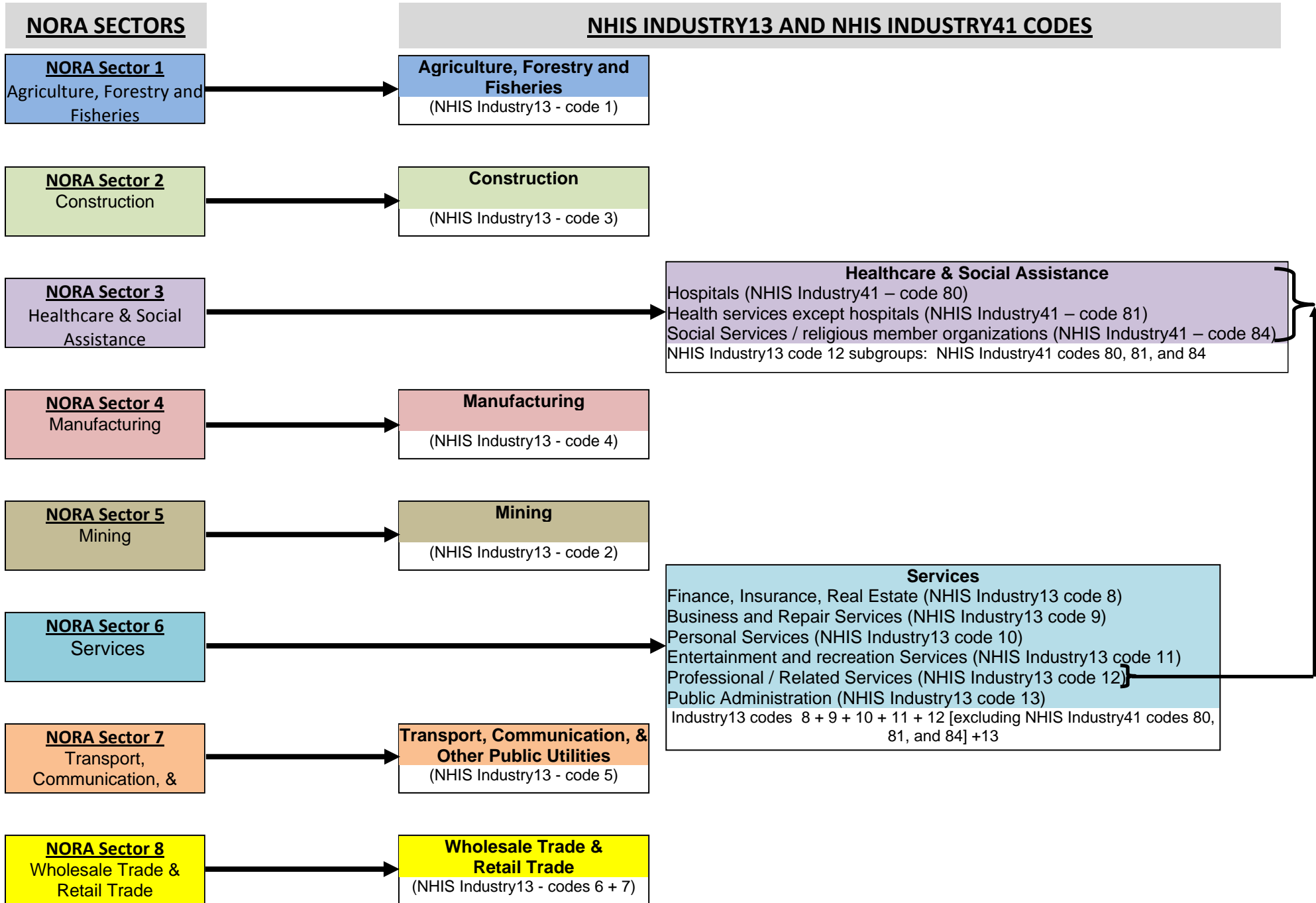


CONVERSION OF 1986-2004 NATIONAL HEALTH INTERVIEW SURVEY (NHIS) INDUSTRIES INTO NORA SECTORS
NIOSH Miami Research Group / University of Miami Miller School of Medicine



Conversion of 1986-2004 National Health Interview Survey (NHIS) Industries into NORA Sectors

NORA Sectors (<http://www.cdc.gov/niosh/programs/>)

1. Agriculture, Forestry, Fishing
2. Construction
3. Healthcare and Social Assistance
4. Manufacturing
5. Mining
6. Services
7. Transportation, Warehousing, Utilities
8. Wholesale and Retail Trade

There is no issue in conversion from NHIS Industries into the NORA Sectors from 2005 NHIS onward since NHIS uses the NAICS Codes.

However, for 1986-2004 NHIS, the NHIS Industry codes do not translate directly into NORA Industry Sectors, and a conversion is necessary (see attached figure which depicts the conversion process). The conversion from NHIS-recoded census industry codes into NORA Sector codes will be accomplished using the NHIS Industry13 Recode to define Sectors 1,2,4,5,7,and 8 as follows:

- Industry13 NHIS code 1 (Agriculture, Forestry and Fisheries) = Sector 1
- Industry13 NHIS code 2 (Mining) = Sector 5
- Industry13 NHIS code 3 (Construction) = Sector 2
- Industry13 NHIS code 4 (Manufacturing) = Sector 4
- Industry13 NHIS code 5 (Transport, Communication, Oth Pub Utilities) = Sector 7
- Industry13 NHIS code 6 (Wholesale Trade) = Sector 8
- Industry13 NHIS code 7 (Retail Trade) = Sector 8

To define NORA Sectors 3 and 6, the following conversions will be used:

- Industry13 NHIS code 8 (Finance, Insurance, Real Estate) = Sector 6
- Industry 13 NHIS code 9 (Business and Repair Services) = Sector 6
- Industry13 NHIS code 10 (Personal Services) = Sector 6
- Industry13 NHIS code 11 (Entertainment and recreation Services) = Sector 6
- Industry13 NHIS code 12 [excluding Industry 41 NHIS codes 80, 81, and 84] = Sector 6
- Industry13 NHIS code 12 only for Industry 41 NHIS codes 80, 81, and 84 = Sector 3
- Industry13 NHIS code 13 (Public Administration) = Sector 6

Using the Industry 41 NHIS code 84 to place workers in the Healthcare and Social Assistance sector has the undesirable result of also including Museums/art galleries/zoos, Labor Unions, and Membership organizations, n.e.c. industries. These people should be assigned to the Services Sector (NORA Sector 6). The 1986-1994 NHIS data sets provide a more detailed industry code that allows the identification of these groups (detail codes 872, 873, and 881, respectively). For the 1986-1994 data sets, this would involve changing approximately 2,000 out of approximately 63,000 Healthcare Sector workers into Service Sector workers (3%). Since this detailed industry code is publicly available in the NHIS data sets, this will be done (see below).

For the 1995-2004 NHIS data sets, this detailed industry information is not publicly available due to confidentiality concerns. A request has been made to the Research Data Center (RDC) at the National Center for Health Statistics (NCHS) in Hyattsville, MD for access to these codes. Until that access is provided, the Service sector workers who are inadvertently captured in the Healthcare sector will remain there.

Specific explanation of detailed industry codes for 1986-1994 data:

NHIS Census Industry Code (CIC) Recodes used to define Healthcare and Social Service NORA Sector 3

Industry41 = 80

Industry41 = 81

Industry41 = 84

Misclassified

Subset of industries (1987 Standardized Industry Codes [SIC]) Ordered by NHIS Census Industrial Codes
(Numbers in parentheses are the 1987 SIC codes)

812 Offices and clinics of physicians (801, 803)

820 Offices and clinics of dentists (802)

821 Offices and clinics of chiropractors (8041)

822 Offices and clinics of optometrists (8042)

830 Offices and clinics of health practitioners, n.e.c. (8043, 8049)

831 Hospitals (806)

832 Nursing and personal care facilities (805)

840 Health services, n.e.c. (807, 808, 809)

841 Legal services (81)

842 Elementary and secondary schools (821)

850 Colleges and universities (822)

851 Vocational schools (824)

852 Libraries (823)

860 Educational services, n.e.c. (829)

861 Job training and vocational rehabilitation services (833)

862 Child day care services (part 835)

863 Family child care homes (part 835)

870 Residential care facilities, without nursing (836)

871 Social services, n.e.c. (832, 839)

872 Museums, art galleries, and zoos (84) **

873 Labor unions (863) **

880 Religious organizations (866)

881 Membership organizations, n.e.c. (861, 862, 864, 865, 869) **

(861): Business associations

(862): Professional membership organizations

(864): Civic, social, fraternal organizations

(865): Political associations

(869): Membership organizations, n.e.c. e.g., Travel motor clubs, Humane societies,
Farm business organizations, Athletic associations

882 Engineering, architectural, and surveying services (871)

890 Accounting, auditing, and bookkeeping services (872)

891 Research, development, and testing services (873)

892 Management and public relations services (874)

10/20/08

References:

The Relationship between the 1990 Census and Census 2000 Industry and Occupation Classification Systems, Technical Paper #65. Prepared By Thomas S. Scopp Under Special Contract with the U.S. Census Bureau, October 30, 2003

Map of 1987 SIC to 2002 NAICS:

<http://www.census.gov/epcd/naics02/S87TON02.HTM>