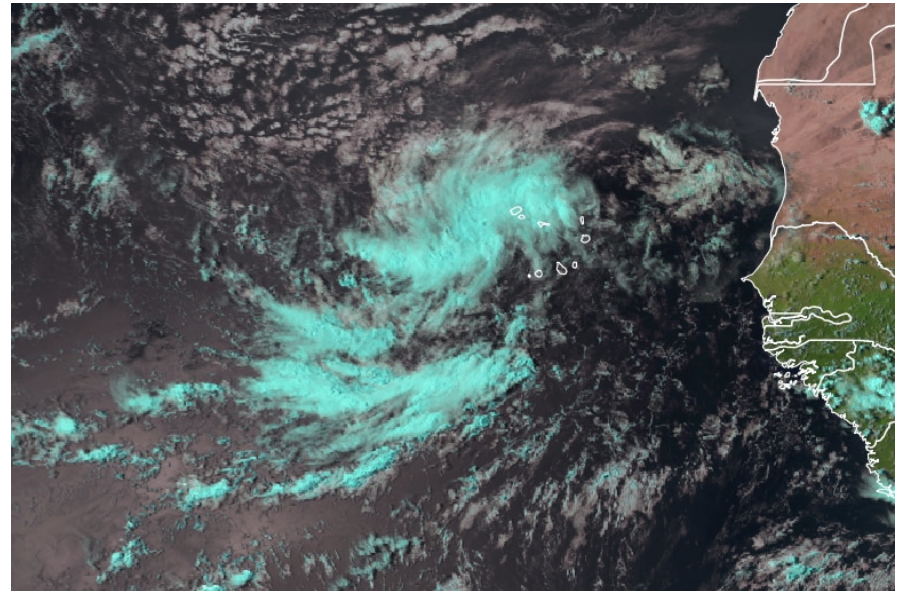


Predictability of tropical cyclogenesis

Convectively Coupled Kelvin Waves interact with African Easterly Waves in the Atlantic Ocean. This Ph.D. project investigates these mechanisms and their predictability, and how they influence tropical cyclone formation.

This African Easterly Wave developed into Hurricane Irma (2017)



(Project pending funding)