

Sea turtle ecology and management

Through a collaboration between academic researchers and government scientists, student will develop a sea turtle research project related to applied spatial ecology, development of population assessment tools, and/or the evaluation of management options.

Student should be keenly interested in statistical analysis, computer programming, and mathematical modeling.

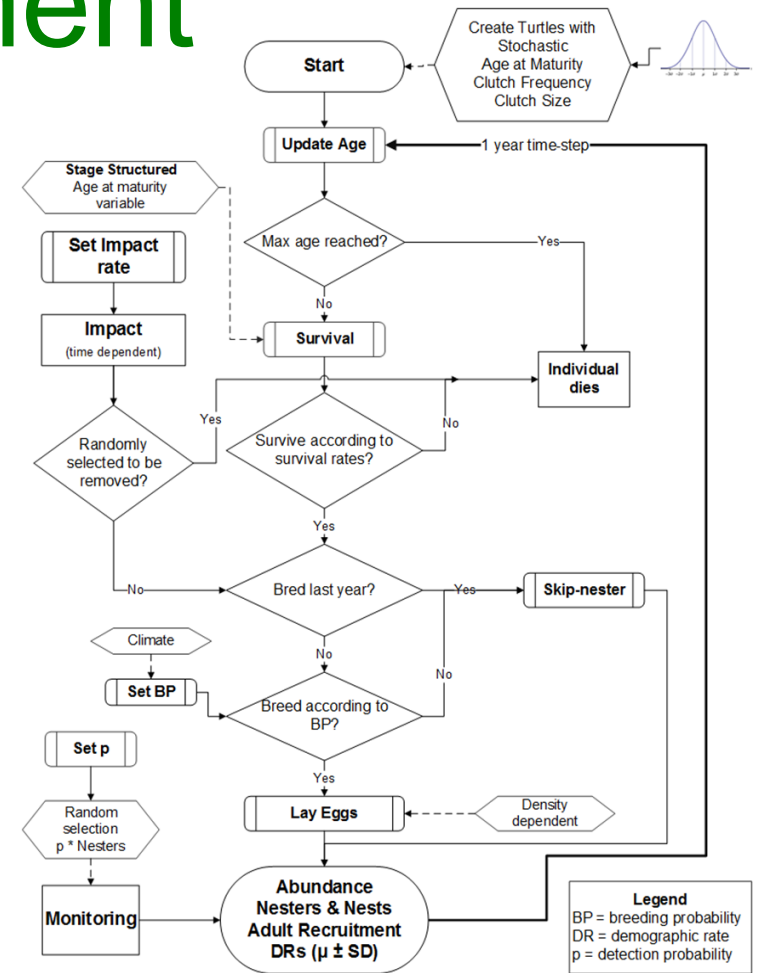


Fig. 1 From: Piacenza et al. 2017. Ecol. Model. 358:25-39